

BTEC IN DIGITAL INFORMATION TECHNOLOGY



THE UNITS:

Component 1: Explore

Exploring user interface design principles and development, developing project planning techniques while developing a new user interface design.

(Internally assessed assignments, 30% of the total course)

Component 2: Develop

Collecting, Presenting and Interpreting Data. Exploring how data impacts on individuals and organisations to draw conclusions and make recommendations on data intelligence.

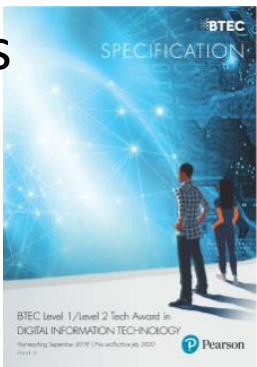
(Internally assessed assignments, 30% of the total course)

Component 3: Apply

Effective Digital Working Practices. Exploring how modern information technology is evolving, considering legal and ethical issues in data and information sharing.

Understanding what cyber security is and how to safeguard against it.

(Externally assessed exam, 40% of the total course)



COMPONENT 1:

Exploring user interface design principles

Section A: User interface design

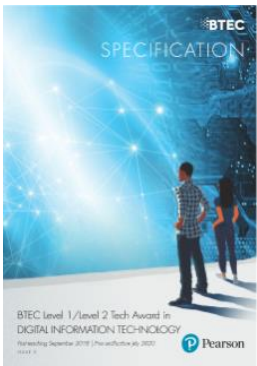
1. What is a user interface?
2. Audience needs
3. Design principles
4. Design an efficient user interface

Section B: Project planning

1. Project planning techniques
2. Create a project plan
3. Create an initial design

Section C: Development and review

1. Develop a user interface – (create a website or multimedia PowerPoint)
2. Refining the user interface
3. Review



COMPONENT 2:

Collecting, Presenting and Interpreting Data

Section A: The impact of data on individuals and organizations

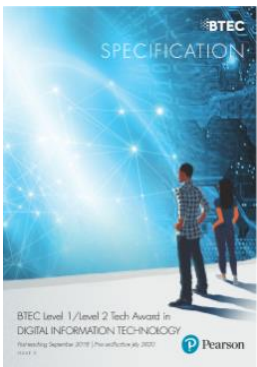
1. Characteristics of data and information
2. Representing information
3. Ensuring data is suitable for processing
4. Data collection
5. Quality of information and its impact on decision making
6. Sectors that use data modelling
7. Threats to individuals

Section B: Create a dashboard using data manipulation tools

1. Data processing methods
2. Produce a dashboard – (create an Excel Spreadsheet interface)

Section C: Draw conclusions and review data presentation methods

1. Drawing conclusion based on the data
2. How presentation affects understanding



COMPONENT 3

Effective Digital Working Practices

Section A: Modern technologies

1. Modern technologies
2. Impact of modern technologies

Section B: Cyber security

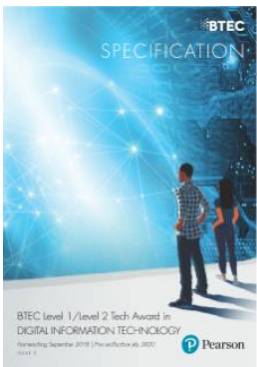
1. Threats to data
2. Prevention and management of threats to data
3. Policy

Section C: The wider implications of digital systems

1. Responsible use
2. Legal and ethical

Section D: Planning and communication in digital systems

1. Forms of notation



GRADING:

- Pass Level 1
- Merit Level 1
- Distinction Level 1
- Pass Level 2
- Merit Level 2
- Distinction Level 2

GCSE equivalent

Grade 1

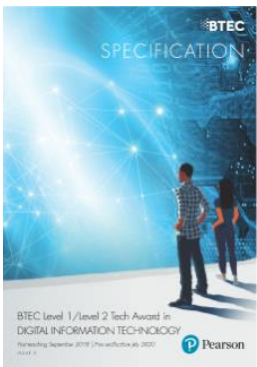
Grade 2

Grade 3

Grade 4/5

Grade 6

Grade 7/8



ASSESSMENT:

- 60% Coursework – components 1 and 2
- 40% Exam – component 3

See the YouTube clip in the link below for a video description of the course: <https://www.youtube.com/watch?v=vtL7HyydMGI>

